

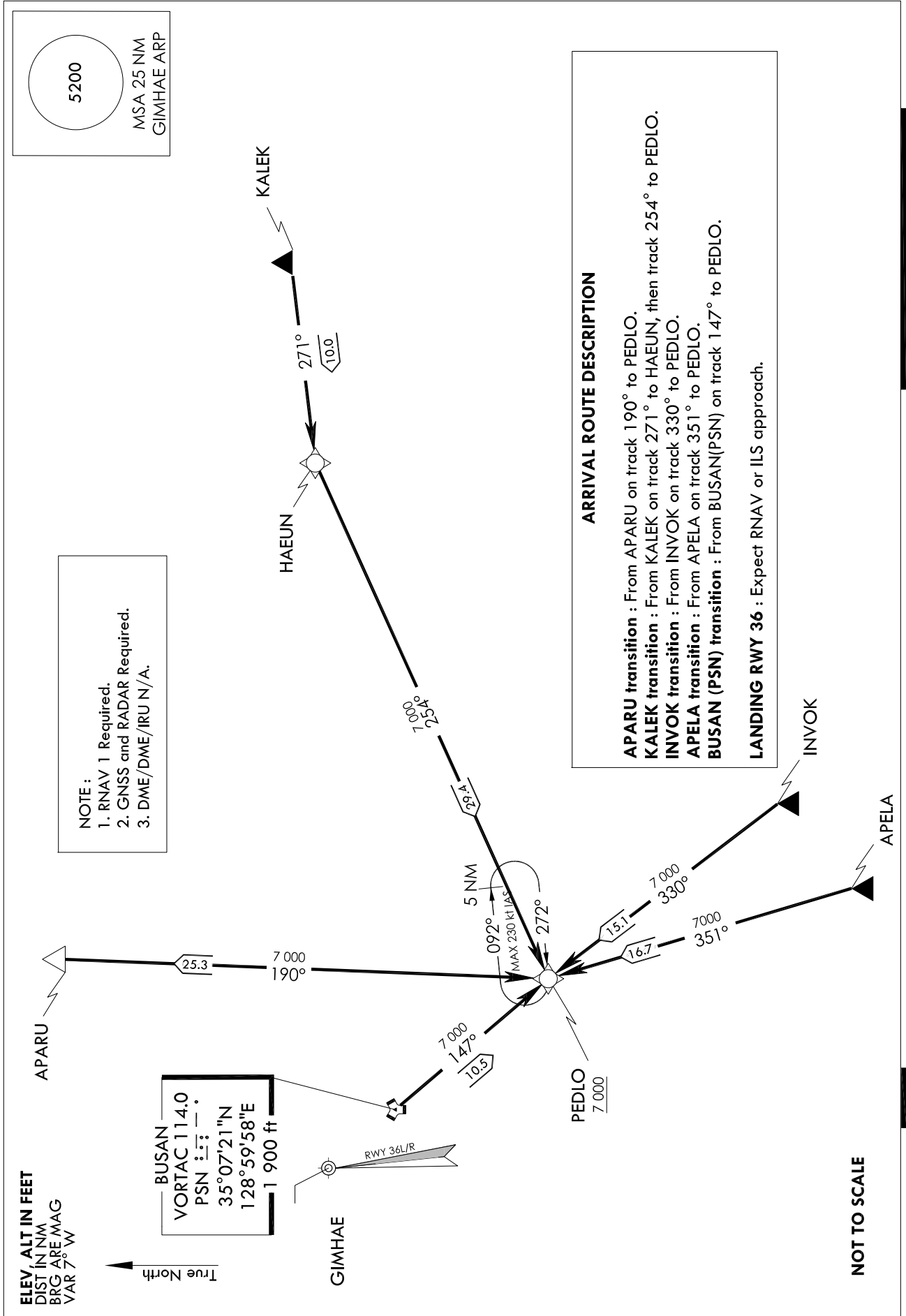
STANDARD ARRIVAL CHART
INSTRUMENT (STAR) - ICAO

TRANSITION ALT 14 000
TRANSITION LVL FL 140

GIMHAE APP	125.5
	364.0
GIMHAE TWR	118.1 118.45
	233.3 236.6

BUSAN/Gimhae Intl(RKPK)
RWY 36L/R
RNAV(GNSS) PEDLO 1

Note : Arrival under U.S. TERPS.



Change : Information of fix name(DIMON → PEDLO) and procedure name(DIMON 1 → PEDLO 1).

BUSAN/Gimhae INTL(RKPK)
RWY 36L/R
RNAV(GNSS) PEDLO 1

AERONAUTICAL DATA TABULATION

Standard Instrument Arrival Procedure Coding Tables

RNAV PEDLO 1 - APARU Transition

Serial Number	Path Descriptor	Waypoint Identifier	Fly-over	Course/Track °M(°T)	Distance (NM)	Turn direction	Altitude (ft)	Speed (kt)	Coordinates	VPA/TCH	Navigation specification	Remarks
001	TF	APARU	-	-	-	-	-	-	35°24'42.1"N 129°09'32.1"E	-	RNAV 1	-
002	TF	PEDLO	-	189.85(182.38)	25.30	-	+7 000	-	34°59'23.1"N 129°08'15.3"E	-	RNAV 1	-

RNAV PEDLO 1 - KALEK Transition

Serial Number	Path Descriptor	Waypoint Identifier	Fly-over	Course/Track °M(°T)	Distance (NM)	Turn direction	Altitude (ft)	Speed (kt)	Coordinates	VPA/TCH	Navigation specification	Remarks
001	TF	KALEK	-	-	-	-	-	-	35°12'32.0"N 129°53'05.0"E	-	RNAV 1	-
002	TF	HAEUN	-	271.01(263.54)	10.00	-	-	-	35°11'23.8"N 129°40'57.4"E	-	RNAV 1	-
003	TF	PEDLO	-	253.55(246.08)	29.39	-	+7 000	-	34°59'23.1"N 129°08'15.3"E	-	RNAV 1	-

RNAV PEDLO 1 - INVOK Transition

Serial Number	Path Descriptor	Waypoint Identifier	Fly-over	Course/Track °M(°T)	Distance (NM)	Turn direction	Altitude (ft)	Speed (kt)	Coordinates	VPA/TCH	Navigation specification	Remarks
001	TF	INVOK	-	-	-	-	-	-	34°47'19.0"N 129°19'23.0"E	-	RNAV 1	-
002	TF	PEDLO	-	330.29(322.83)	15.13	-	+7 000	-	34°59'23.1"N 129°08'15.3"E	-	RNAV 1	-

RNAV PEDLO 1 - APELA Transition

Serial Number	Path Descriptor	Waypoint Identifier	Fly-over	Course/Track °M(°T)	Distance (NM)	Turn direction	Altitude (ft)	Speed (kt)	Coordinates	VPA/TCH	Navigation specification	Remarks
001	TF	APELA	-	-	-	-	-	-	34°43'23.0"N 129°14'00.0"E	-	RNAV 1	-
002	TF	PEDLO	-	351.01(343.54)	16.66	-	+7 000	-	34°59'23.1"N 129°08'15.3"E	-	RNAV 1	-

RNAV PEDLO 1 - BUSAN(PSN) Transition

Serial Number	Path Descriptor	Waypoint Identifier	Fly-over	Course/Track °M(°T)	Distance (NM)	Turn direction	Altitude (ft)	Speed (kt)	Coordinates	VPA/TCH	Navigation specification	Remarks
001	TF	BUSAN(PSN)	-	-	-	-	-	-	35°07'21.5"N 128°59'58.5"E	-	RNAV 1	-
002	TF	PEDLO	-	146.93(139.46)	10.47	-	+7 000	-	34°59'23.1"N 129°08'15.3"E	-	RNAV 1	-

HOLDING PROCEDURE

Holding Identification	Path Descriptor	Waypoint Identifier	Fly-over	Course/Track °M(°T)	Distance (NM)	Turn direction	Altitude (ft)	Speed (kt)	Coordinates	VPA/TCH	Navigation specification	Remarks
RNAV PEDLO 1	HIM	PEDLO	-	271.7(264.2)	5	R	-10 000 +7 000	-230	34°59'23.1"N 129°08'15.3"E	-	-	-

Change : Informataion of fix name(DIMON → PEDLO) and procedure name(DIMON 1 → PEDLO 1).

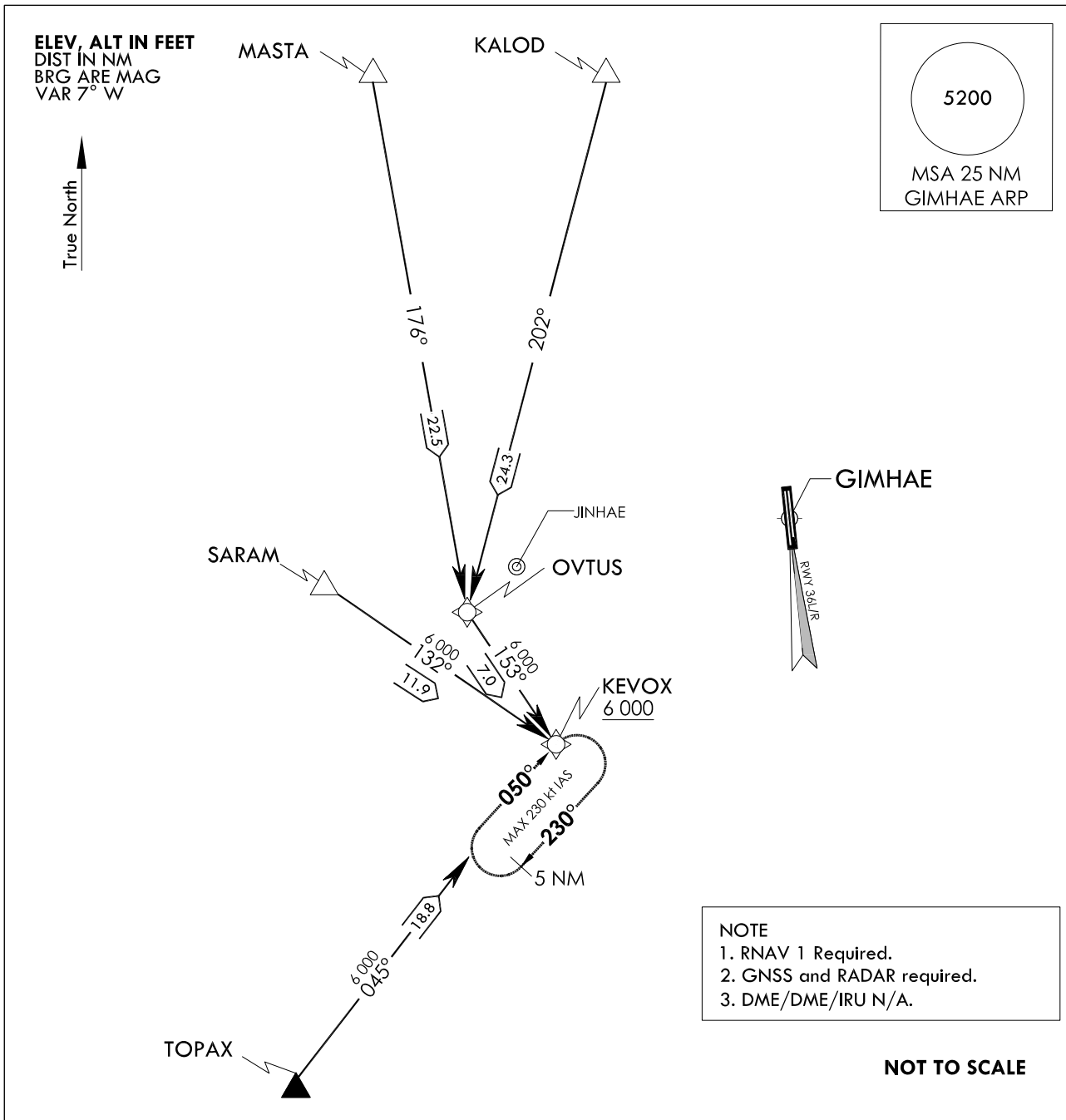
STANDARD ARRIVAL CHART
INSTRUMENT (STAR) - ICAO

TRANSITION	ALT	14 000
TRANSITION	LVL	FL 140

GIMHAE APP	125.5
	364.0
GIMHAE TWR	118.1 118.45
	233.3 236.6

BUSAN/Gimhae Intl(RKPK)
RWY 36L/R
RNAV(GNSS) KEVOX 2

Note : Arrival under U.S. TERPS.



NOTE
1. RNAV 1 Required.
2. GNSS and RADAR required.
3. DME/DME/IRU N/A.

ARRIVAL ROUTE DESCRIPTION

KEVOX 2 ARRIVAL

RWY 36L/R : Expect RNAV or ILS approach.

MASTA transition : From MASTA on track 176° to OVTUS, then track 153° to KEVOX.

KALOD transition : From KALOD on track 202° to OVTUS, then track 153° to KEVOX.

SARAM transition : From SARAM on track 132° to KEVOX.

TOPAX transition : From TOPAX on track 045° to KEVOX.

BUSAN/Gimhae INTL(RKPK)
RWY 36L/R
RNAV(GNSS) KEVOX 2

AERONAUTICAL DATA TABULATION

Standard Instrument Arrival Procedure Coding Tables

RNAV KEVOX 2 - MASTA Transition

Serial Number	Path Descriptor	Waypoint Identifier	Fly-over	Course/Track °M(°T)	Distance (NM)	Turn direction	Altitude (ft)	Speed (kt)	Coordinates	VPA/TCH	Navigation specification	Remarks
001	TF	MASTA	-	-	-	-	-	-	35°28'47.0"N 128°33'40.0"E	-	RNAV 1	-
002	TF	OVTUS	-	176.25(168.79)	22.50	-	-	-	35°06'40.3"N 128°39'00.0"E	-	RNAV 1	-
002	TF	KEVOX	-	153.38(145.87)	7.01	-	+6 000	-	35°00'51.7"N 128°43'47.2"E	-	RNAV 1	-

RNAV KEVOX 2 - KALOD Transition

Serial Number	Path Descriptor	Waypoint Identifier	Fly-over	Course/Track °M(°T)	Distance (NM)	Turn direction	Altitude (ft)	Speed (kt)	Coordinates	VPA/TCH	Navigation specification	Remarks
001	TF	KALOD	-	-	-	-	-	-	35°30'12.1"N 128°46'26.5"E	-	RNAV 1	-
002	TF	OVTUS	-	202.04(194.57)	24.27	-	-	-	35°06'40.3"N 128°39'00.0"E	-	RNAV 1	-
002	TF	KEVOX	-	153.38(145.87)	7.01	-	+6 000	-	35°00'51.7"N 128°43'47.2"E	-	RNAV 1	-

RNAV KEVOX 2 - SARAM Transition

Serial Number	Path Descriptor	Waypoint Identifier	Fly-over	Course/Track °M(°T)	Distance (NM)	Turn direction	Altitude (ft)	Speed (kt)	Coordinates	VPA/TCH	Navigation specification	Remarks
001	TF	SARAM	-	-	-	-	-	-	35°07'36.3"N 128°31'46.7"E	-	RNAV 1	-
002	TF	KEVOX	-	131.74(124.27)	11.94	-	+6 000	-	35°00'51.7"N 128°43'47.2"E	-	RNAV 1	-

RNAV KEVOX 2 - TOPAX Transition

Serial Number	Path Descriptor	Waypoint Identifier	Fly-over	Course/Track °M(°T)	Distance (NM)	Turn direction	Altitude (ft)	Speed (kt)	Coordinates	VPA/TCH	Navigation specification	Remarks
001	TF	TOPAX	-	-	-	-	-	-	34°45'55.3"N 128°29'51.7"E	-	RNAV 1	-
002	TF	KEVOX	-	044.92(037.46)	18.81	-	+6 000	-	35°00'51.7"N 128°43'47.2"E	-	RNAV 1	-

HOLDING PROCEDURE

Holding Identification	Path Descriptor	Waypoint Identifier	Fly-over	Course/Track °M(°T)	Distance (NM)	Turn direction	Altitude (ft)	Speed (kt)	Coordinates	VPA/TCH	Navigation specification	Remarks
RNAV KEVOX 1	HM	KEVOX	-	050(042.5)	5	R	-10 000 +6 000	-230	35°00'51.7"N 128°43'47.2"E	-	-	-

Change : Information of procedure name(ZULBI → KEVOX).

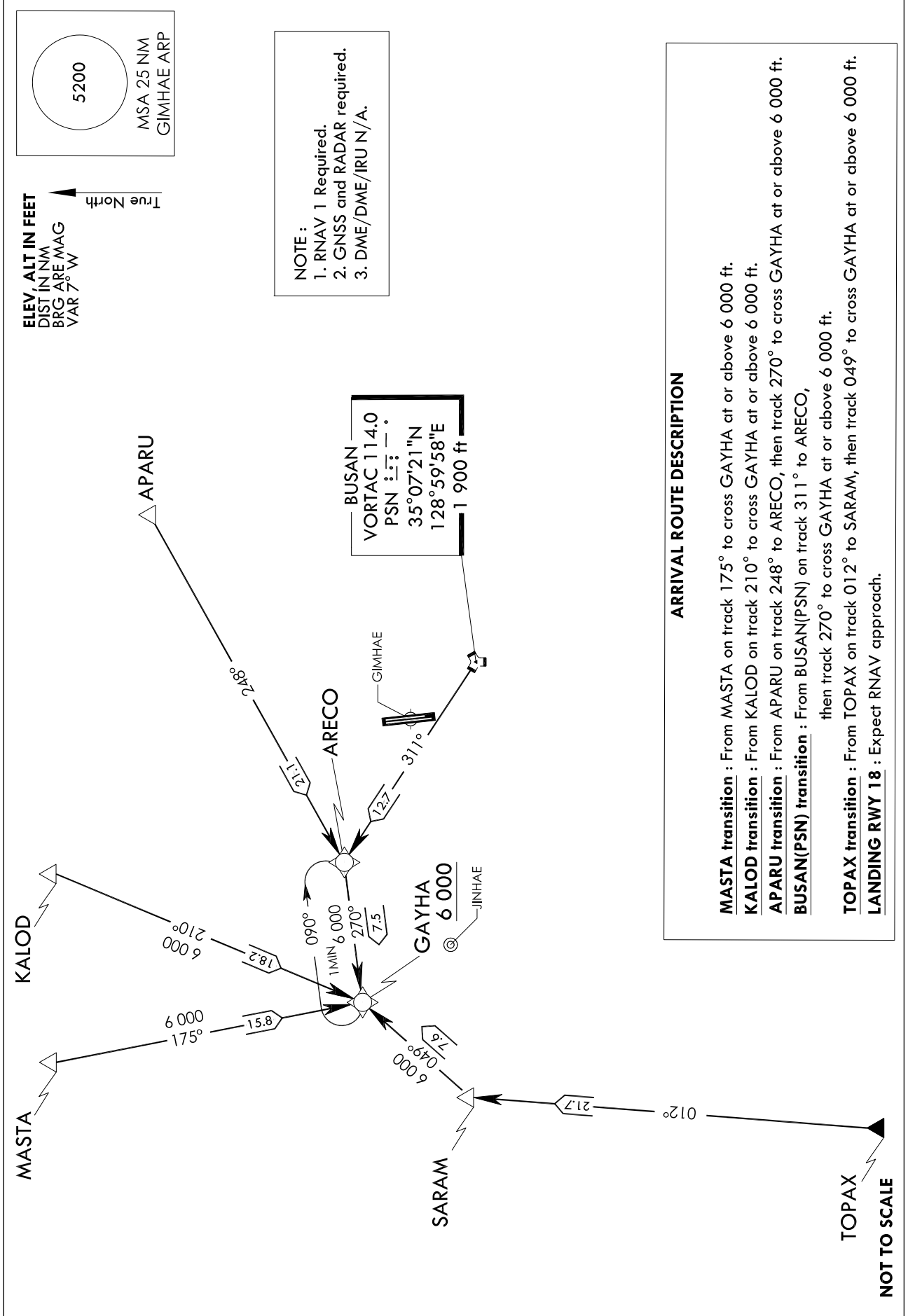
STANDARD ARRIVAL CHART
INSTRUMENT (STAR) - ICAO

TRANSITION ALT 14 000
TRANSITION LVL FL 140

GIMHAE APP	125.5
	364.0
GIMHAE TWR	118.1 118.45
	233.3 236.6

BUSAN/Gimhae Intl(RKPK)
RWY 18L/R
RNAV(GNSS) GAYHA 2

Note : Arrival under U.S. TERPS.



Change : Page control.

BUSAN/Gimhae INTL(RKPK)
RWY 18L/R
RNAV(GNSS) GAYHA 2

AERONAUTICAL DATA TABULATION

Standard Instrument Arrival Procedure Coding Tables

GNSS GAYHA 2 - MASTA Transition

Serial Number	Path Descriptor	Waypoint Identifier	Fly-over	Course/Track °M(°T)	Distance (NM)	Turn direction	Altitude (ft)	Speed (kt)	Coordinates	VPA/TCH	Navigation specification	Remarks
001	TF	MASTA	-	-	-	-	-	-	35°28'47.0"N 128°33'40.0"E	-	RNAV 1	-
002	TF	GAYHA	-	174.74(167.28)	15.77	-	+6 000	-	35°13'22.4"N 128°37'54.4"E	-	RNAV 1	-

GNSS GAYHA 2 - KALOD Transition

Serial Number	Path Descriptor	Waypoint Identifier	Fly-over	Course/Track °M(°T)	Distance (NM)	Turn direction	Altitude (ft)	Speed (kt)	Coordinates	VPA/TCH	Navigation specification	Remarks
001	TF	KALOD	-	-	-	-	-	-	35°30'12.1"N 128°46'26.5"E	-	RNAV 1	-
002	TF	GAYHA	-	210.07(202.61)	18.19	-	+6 000	-	35°13'22.4"N 128°37'54.4"E	-	RNAV 1	-

GNSS GAYHA 2 - APARU Transition

Serial Number	Path Descriptor	Waypoint Identifier	Fly-over	Course/Track °M(°T)	Distance (NM)	Turn direction	Altitude (ft)	Speed (kt)	Coordinates	VPA/TCH	Navigation specification	Remarks
001	TF	APARU	-	-	-	-	-	-	35°24'42.1"N 129°09'32.1"E	-	RNAV 1	-
002	TF	ARECO	-	248.36(240.90)	21.14	-	-	-	35°14'22.1"N 128°46'59.1"E	-	RNAV 1	-
002	TF	GAYHA	-	269.91(262.44)	7.50	-	+6 000	-	35°13'22.4"N 128°37'54.4"E	-	RNAV 1	-

GNSS GAYHA 2 - BUSAN(PSN) Transition

Serial Number	Path Descriptor	Waypoint Identifier	Fly-over	Course/Track °M(°T)	Distance (NM)	Turn direction	Altitude (ft)	Speed (kt)	Coordinates	VPA/TCH	Navigation specification	Remarks
001	TF	BUSAN(PSN)	-	-	-	-	-	-	35°07'21.5"N 128°59'58.5"E	-	RNAV 1	-
002	TF	ARECO	-	310.84(303.38)	12.74	-	-	-	35°14'22.1"N 128°46'59.1"E	-	RNAV 1	-
002	TF	GAYHA	-	269.91(262.44)	7.50	-	+6 000	-	35°13'22.4"N 128°37'54.4"E	-	RNAV 1	-

GNSS GAYHA 2 - TOPAX Transition

Serial Number	Path Descriptor	Waypoint Identifier	Fly-over	Course/Track °M(°T)	Distance (NM)	Turn direction	Altitude (ft)	Speed (kt)	Coordinates	VPA/TCH	Navigation specification	Remarks
001	TF	TOPAX	-	-	-	-	-	-	34°45'55.3"N 128°29'51.7"E	-	RNAV 1	-
002	TF	SARAM	-	011.62(004.15)	21.71	-	-	-	35°07'36.3"N 128°31'46.7"E	-	RNAV 1	-
002	TF	GAYHA	-	048.53(041.07)	7.64	-	+6 000	-	35°13'22.4"N 128°37'54.4"E	-	RNAV 1	-

HOLDING PROCEDURE

Holding Identification	Path Descriptor	Waypoint Identifier	Fly-over	Course/Track °M(°T)	Time (min)	Turn direction	Altitude (ft)	Speed (kt)	Coordinates	VPA/TCH	Navigation specification	Remarks
RNAV GAYHA 1	HM	GAYHA	-	270(262.5)	1	R	-10 000 +6 000	-210	35°13'22.4"N 128°37'54.4"E	-	-	-